



**Intelligent  
Computer  
Solutions**

*Make the intelligent choice...*

**FEATURES:**

- 1 Extreme Speed
- 2 Compact size
- 3 Versatile "Source" Drive Ports
- 4 Standard Drive Caddies
- 5 Multiple Interface Ports
- 6 Modes of Operation
- 7 Multiple Imaging Formats
- 8 External Storage
- 9 Support for USB Duplication
- 10 Windows Embedded Standard 2009 Operating System (Based on Windows XP)
- 11 Upload and Download Images to Network Storage Area
- 12 Built-in drive coolers with temperature sensors
- 13 Optional Drive Caddies
- 14 Optional Open Drive Tray
- 15 Optional PCI-e Expansion Box
- 16 Optional Barcode Reader Support
- 17 USB Card Reader Support
- 18 Convenient and Easy Upgrades
- 19 Logging
- 20 Intuitive and Easy to Use Interface
- 21 8" Full Color Touch screen
- 22 HPA
- 23 Easy Maintenance
- 24 Remote Monitor and Control Network Application
- 25 Secure Operation

## **Image MASter™ WipePRO**

**Quickly Erase up to 8 Hard Drives  
simultaneously at speeds exceeding  
7GB/minute!**

*From the IM Wipe MASter family, The Image  
MASter™ Wipe PRO is the next generation, fast  
reliable and affordable Hard Drive Sanitization Station*



**Image MASter™  
Wipe PRO**

[www.ics-iq.com](http://www.ics-iq.com)

• [www.icsforensic.com](http://www.icsforensic.com)



# Image MASter™ WipePRO

**Quickly Erase up to 8 Hard Drives simultaneously at speeds exceeding 7GB/minute!**

From the IM Wipe MASter family, The Image MASter™ Wipe PRO is the next generation, fast reliable and affordable Hard Drive Sanitization Station

---

## FEATURES:

### 1 **Extreme Speed**

The Image MASter™ Wipe PRO is designed to support today's High Performance drives. The unit features Sanitization Technology that wipes drives at SATA-2 speed. This technology not only allows the unit to take advantage of today's High Performance drives but also allows the user to be prepared for tomorrow's hard drive speed improvements, with potential 18GB/minute speed rate.

### 2 **Compact size**

The unit's Small Footprint design saves work space.

### 3 **Standard Drive Caddies**

The unit is available with either a 2.5"/1.8" or a 3.5" House and Drive Caddies. Both unit versions support cable-free insertion of eight (8) 2.5"/1.8" or 3.5" Form Factor SATA/SAS drives accordingly.

### 4 **Multiple Interface Ports**

In addition to the native SATA/SAS ports, the unit is also designed with five USB 2.0 ports, one e-SATA port and one Gigabit Ethernet connection that allow sanitization of USB devices and remote control and monitor of the unit. One FireWire connection and one FAST SCSI connection are available with the purchase of the Optional Expansion box.

### 5 **Modes of Operation**

**WipeOut DoD:** The WipeOut DoD is designed to meet the U.S. Department of Defense specification DOD 5220-22M regarding the sanitization of hard disk drive data.

**WipeOut Fast Option:** The WipeOut Fast option provides a quick non-DoD method of sanitizing a

drive of all previously stored data. Allows erasing data in one pass.

**Secure Erase:** Erase data using the Secure Erase feature supported by many of today's modern drives.

### 6 **Support for USB Sanitization**

The unit supports sanitization of up to 5 USB devices.

### 7 **Built-in drive coolers with temperature sensors**

Each of the Drive Housings has built-in cooling fans with temperature sensors to keep hard drives operating optimally

### 8 **Windows Embedded Standard 2009 Operating System (Based on Windows XP)**

The Image MASter™ Wipe PRO runs on the Windows XP Based Operating System, providing flexibility and device compatibility support.

- Unit can be customized for Multi-Language support.
- Unit can be customized to individual's needs upon request.
- Compatible with a wide range of PC peripherals.

### 9 **Optional Drive Caddies**

With the use of the Optional 2.5"/1.8" Host and Drive Caddy the IM Wipe PRO 3.5" can also sanitize eight (8) 2.5"/1.8" SAS/SATA Laptop drives. With the use of the Optional 3.5" Host and Drive Caddy the IM Wipe PRO 2.5" unit can also sanitize eight (8) 3.5" SAS/SATA drives. Both unit versions can erase up to eight (8) IDE drives with the IDE Host and Drive Caddy Option.

### **10 Optional Open Drive Tray**

Use of the Open Drive Tray provides a flexible drive mounting solution for non-standard Form Factor drives and allows mounting of different Form Factor drive combinations which include:

- 3.5" Drives
- 2.5" Drives
- Flash Media such as Compact Flash, Memory Sticks, SD, Micro SD, Multi Media card
- Proprietary Caddy Enclosures

With the Optional Open Tray, drives are held in an up right position to allow better air flow.

### **11 Optional PCI-e Expansion Box**

The unit is equipped with 3 PCI-e one lane expansion slots\* for upgradeability and additional device support. The expansion box will consist of the following:

- One PCI-e SCSI 320Mbit/sec Controller
- One PCI-e FireWire Controller with two (2) 1394B ports and one (1) 1394A port
- One PCI-e Express Card Reader Controller for use with Express Memory Card (not USB based) or other express plug in cards.

Individual controllers can be replaced with special purpose controller such as WiFi card. All additional special purpose controllers should be qualified by ICS prior to use.

\*Only one PCI-e option may be used at a time.

### **12 Optional Barcode Reader Support**

The unit supports the installation and use of an optional barcode reader.

### **13 USB Card Reader Support**

Optional 3rd Party USB Card Reader Support allows the sanitization of Flash Media such as Compact Flash, Memory Sticks, SD, Micro SD, Multi Media card, etc.

### **14 Convenient and Easy Upgrades**

Easily update Software through a USB port. Free Software Updates are provided periodically.

### **15 Logging**

The unit records and saves detailed log information.

### **16 Intuitive and Easy to Use Interface**

The unit provides an intuitive, 3 level graphical user interface. The Operational wizard allows the user to quickly and easily configure and begin operations. The Advance Settings can also be selected for low level control.

### **17 8" Full Color Touch screen**

Built-in touch screen eliminates the need of connecting an external monitor, mouse or keyboard.

### **18 HPA**

Unit has the ability to wipe/sanitize hidden programmable areas which may exist on hard drives.

### **19 Easy Maintenance**

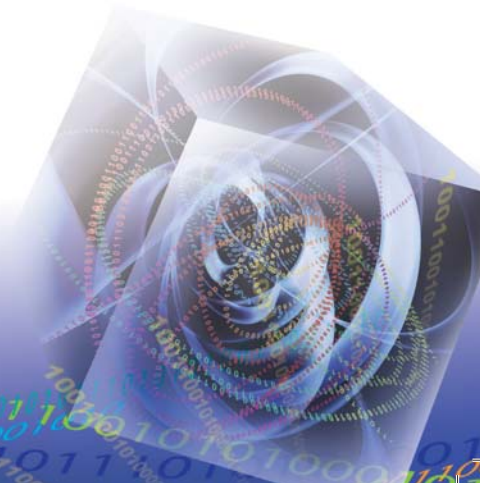
The cable-free insertion mounting design uses a small, low cost, and easy to replace SATA/SAS interface board for each connection.

### **20 Remote Monitor and Control Network Application**

The unit's Control Network Application software can remotely control and monitor from one to multiple duplicators that are connected to the network. User can perform all applications and run commands remotely.

### **21 Secure Operation**

Unit provides the ability to lock settings for secure operation.



# PRODUCT SPECIFICATIONS AND ADDITIONAL OPTIONS FOR Image MASter™ WipePRO

## SOFTWARE SUPPORT

- HPA
- DCO (Pending Development)
- Bad Sector Handling
- Multi-language Support

## HARD DRIVE SUPPORT

(ADDITIONAL ADAPTERS MAY BE REQUIRED\*)

- e-SATA Drives\*
- SAS Drives
- SATA Drives
- USB Portable Devices
- USB Thumb Drive Devices
- IDE Drives\*
- Micro SATA\*
- 2.5", 1.8" Notebook Drives\*
- ZIF drives\*
- Solid State Drives
- SD series /MS series/XD/M2/TF/CFI/CFII.
- Supports 3.3V Devices

## ABOUT INTELLIGENT COMPUTER SOLUTIONS, INC.

ICS is a pioneer in disk drive duplication, having first introduced this technology to the world in 1991, in a US patented device. For over nineteen years ICS has focused on providing cutting-edge solutions to the Computer Hardware Manufacturers, large IT Organizations, and small IT Departments around the world. ICS also supports state, local and federal government Law Enforcement communities and the growing, private digital forensics investigation sector through the development of leading edge digital forensics hardware and software technology used in some of the most complex digital forensics investigations today. ICS' product line includes: Handheld IT and Forensic Duplicators, Industrial Multi-Drive Duplicators, Portable Forensic Workstations, Hard Drive Sanitization Units, Write Protection devices and more. Learn more about ICS at [www.ics-iq.com](http://www.ics-iq.com)

## OPTIONS

- PCI-e expansion box: Equipped with 3 PCI-E one lane expansion slots for upgradability and additional device support.

The expansion box includes:

1. PCI-e SCSI 320Mbit/sec Controller, for SCSI drive support (Additional adaptors may be required).
2. PCI-e FireWire Controller with two 1394B ports and 1394A port
3. PCI-e Express Card Reader controller for use with Express Memory Card (not USB based card) or other express plug in cards.

Individual Controllers can be replaced with special purpose controller such as WiFi card.

External devices that require power need to be powered from external power source.

- Open Drive Tray
- IDE Host and Drive Caddy
- 2.5"/1.8" Host and Drive Caddy
- 3.5" Host and Drive Caddy
- Optional Adapters for e-SATA drives, IDE drives, Micro SATA drives, 2.5", 1.8" Notebook drives and ZIF drives
- USB Mini Keyboard.
- Miniature USB Hub.
- USB to Wi-Fi.

## UNIT SPECIFICATIONS

- Unit Net Weight:
- 15lbs (6.8kg)
- Overall Dimensions:
- 15.7" x 3.8" x 15.5"
- (400mm x 100mm x 400mm)

## WARRANTY

One Year Parts and Labor with an optional one year extended warranty



**Intelligent  
Computer  
Solutions**

9350 ETON AVE.  
CHATSWORTH, CA 91311  
PHONE: (888) 994-4678  
FAX: (818) 998-3190  
[WWW.ICS-IQ.COM](http://WWW.ICS-IQ.COM)  
[WWW.ICSF0RENSIC.COM](http://WWW.ICSF0RENSIC.COM)